

APPROVED ATTIRE FOR HIGH SCHOOL BOYS



BLACK OR KHAKI

Pants, Flat Front, Athletic Cut

Approved Daily Attire w/ Belt

Brushed twill pants with a relaxed, athletic cut. This style has a flat, no-pleat cut with belt loops, front slash pockets and slit pockets in back.

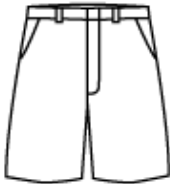


WHITE ONLY

Shirt, Oxford - Short Sleeve w/ Logo

Approved Daily Attire - Must have Logo

Shirt is customized with SCHOOL LOGO. Boy's short sleeve oxford shirt with button down collar. The front has a top stitched placket for buttons and buttonholes. Pocket on left chest.



BLACK OR KHAKI

Shorts, Long Length, Flat Front

Approved Daily Attire w/ Belt

Brushed twill shorts with a relaxed, athletic cut and longer inseam. This style has a flat, no-pleat cut with belt loops, front slash pockets and slit pockets in back. Fabric is a soft brushed twill of 65%poly 35% cotton.



WHITE ONLY

Shirt, Oxford - Long Sleeve w/ Logo

Approved Daily Attire - Must have Logo

Shirt is customized with SCHOOL LOGO. Boy's long sleeve oxford shirt with button down collar. The front and sleeve cuff have a top stitched placket for buttons and buttonholes. Pocket on left chest.



BLACK OR KHAKI

Shorts, Flat Front Athletic Cut

Approved Daily Attire w/ Belt

Brushed twill shorts with a relaxed, athletic cut. This style has a flat, no-pleat cut with belt loops, front slash pockets and slit pockets in back.



WHITE ONLY

Shirt, Turtleneck w/ Logo

Approved Daily Attire - Must have Logo

Shirt is customized with SCHOOL LOGO on collar. Long Sleeve turtleneck of an interlock or smooth knit. Stretch ribbing at neck and cuff. Fabric is a poly/cotton blend.



GREEN / WHITE/ GREY

Shirt, Pique Polo Short Sleeve w/ Logo

White Polo REQUIRED FOR PICTURES

Shirt is customized with SCHOOL LOGO. Short sleeve polo of a mesh type or pique knit. Shirt has a banded sleeve cuff, 3 button front placket, and knit collar.

PLEASE NOTE:

- All pants/shorts must be Dickies,
- Dockers, or True Grits in black or khaki
- Cargo pants/shorts are NOT acceptable
- Belts are required with all pants at all times
- Shirts must be tucked in at all times
- Closed-toe shoes are required to be worn at all times